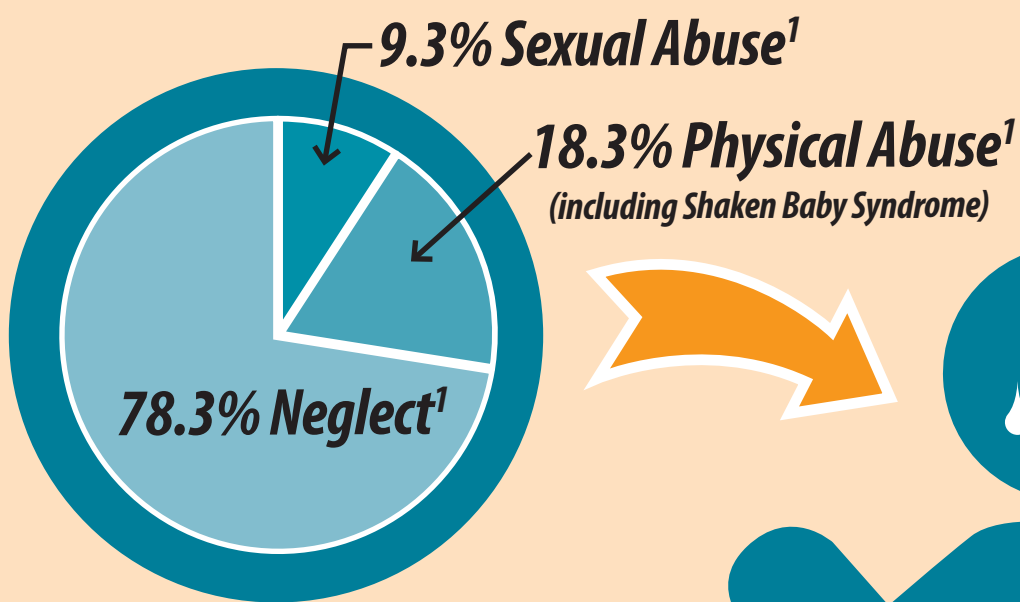


CHILD ABUSE PREVENTION

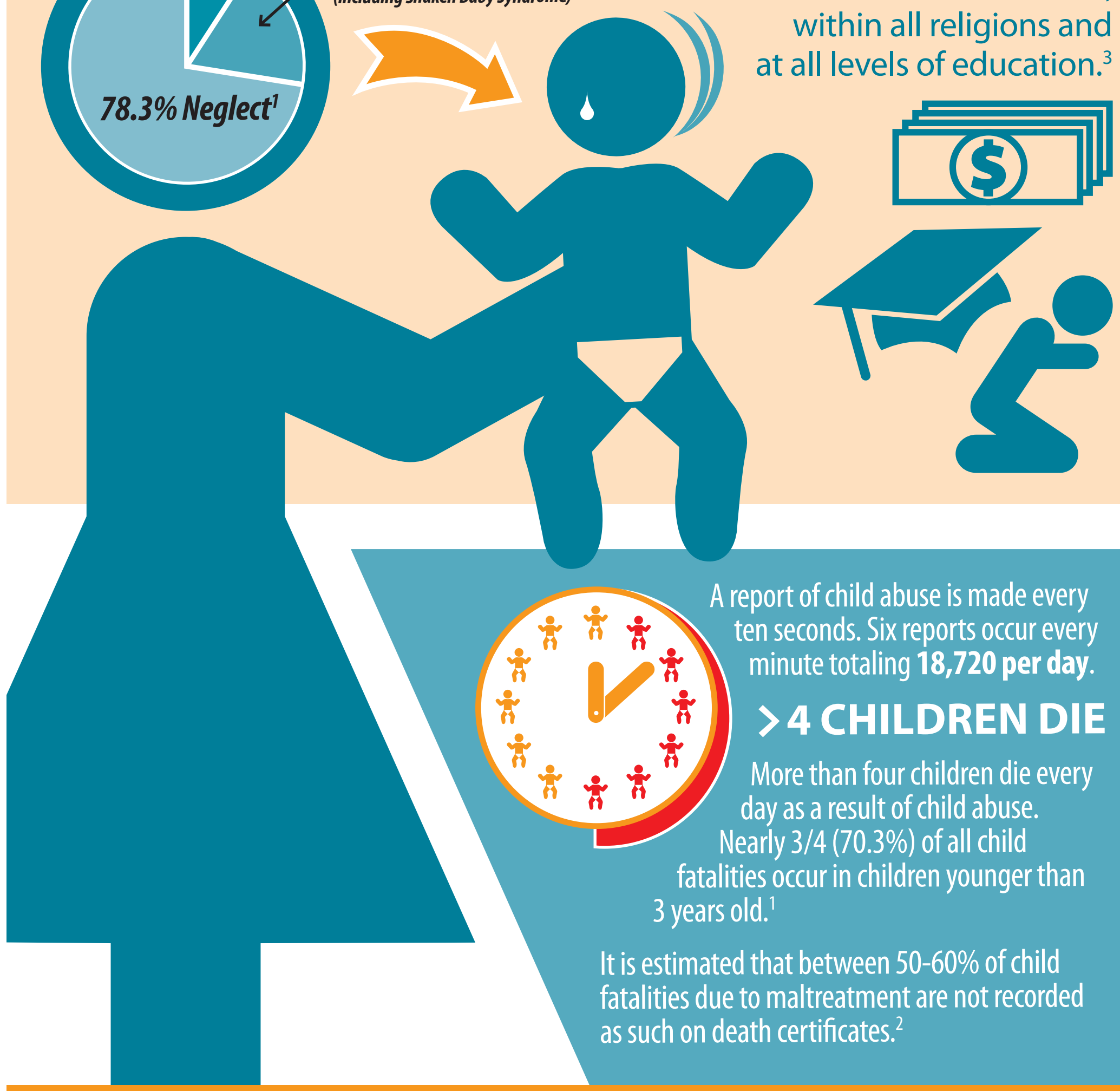
Know the facts &  the abuse

HELP END CHILD ABUSE TODAY!

100% Preventable!



Child abuse occurs at every socioeconomic level, across ethnic and cultural lines, within all religions and at all levels of education.³



A report of child abuse is made every ten seconds. Six reports occur every minute totaling **18,720 per day.**

> 4 CHILDREN DIE

More than four children die every day as a result of child abuse. Nearly 3/4 (70.3%) of all child fatalities occur in children younger than 3 years old.¹

It is estimated that between 50-60% of child fatalities due to maltreatment are not recorded as such on death certificates.²

Alcohol & Drug Use

10-11% of all births are affected by prenatal alcohol or illicit drug exposure.⁵

Substance use during pregnancy may result in premature birth, miscarriage, and a variety of behavioral and cognitive problems in exposed children.⁶

Alcohol use among pregnant women 15-44 years old:⁴

15.8% ages 15-17

9.8% ages 18-25

12.5% ages 26-44

30%

of abused/neglected children will later abuse their own children.³

25%

are more likely to experience teenage pregnancy.³

STOP
the abuse

1. U.S. Department of Health and Human Services, Administration for Children and Families, Administration on Children, Youth and Families, Children's Bureau. (2013). Child Maltreatment 2012. Available from <http://www.acf.hhs.gov/programs/cb/research-data-technology/statistics-research/child-maltreatment>

2. U.S. Department of Health and Human Services Administration for Children and Families Administration on Children, Youth and Families Children's Bureau. Child Abuse and Neglect Fatalities 2011: Statistics and Interventions. Retrieved from <http://www.childwelfare.gov/pubs/factsheets/fatality.pdf>

3. Long - Term Consequences of Child Abuse and Neglect. Child Welfare Information Gateway. Washington, D.C.: U.S. Department of Health and Human Services, 2013. Retrieved from http://www.childwelfare.gov/pubs/factsheets/long_term_consequences.cfm

4. Substance Abuse and Mental Health Services Administration, Office of Applied Studies. (September 11, 2008). The NSDUH Report - Alcohol Use among Pregnant Women and Recent Mothers: 2002 to 2007. Rockville, MD.

5. National Center on Substance Abuse and Child Welfare (NCSACW) - Substance-Exposed Infants: State Responses to the Problem 2009

6. National Institute on Drug Abuse (NIDA). (2011, May). Drug abuse among pregnant women in the U.S. Retrieved from <http://www.drugabuse.gov/publications/topics-in-brief/prenatal-exposure-to-drugs-abuse>

STEP-BY-STEP PRINTING INSTRUCTIONS:

All PDF documents require the use of Adobe Acrobat Reader, which can be downloaded for free at www.adobe.com/products/acrobat/readstep2.html.

- 1) Open file in Adobe Acrobat
- 2) File -> Print
- 3) Under Page Size & Handling, highlight the Poster button
 - a. Select tile scale of 100%
 - b. Select an overlap of 0.005 in
 - c. Select poster orientation of Portrait
- 4) Click the Page Setup button at the bottom of the page
 - a. Select paper size to 11 x 17
- 5) Check your Printer Properties by clicking the Properties button after the printer name to ensure
 - a. Color printing is enabled
 - b. Single-sided printing is selected
 - c. Page size is selected as 11 x 17
- 6) Click the Print button at the bottom of the page
- 7) Cut out printed poster and tape 4 printed pages together



Sponsored by: **Realityworks** Live it. Learn it.™ Experiential Learning Technology

CHILD ABUSE PREVENTION

Know the facts & **STOP** the abuse

HELP END CHILD ABUSE TODAY!

100% Preventable!

9.3% Sexual Abuse¹
(Including shaken baby syndrome)²

18.3% Physical Abuse³

Child abuse occurs at every socioeconomic level, across ethnic and cultural lines, within all religions and at all levels of education.⁴

70% Preventable

A report of child abuse is made every ten seconds. Six reports occur every minute totaling 18,720 per day.

> 4 CHILDREN DIE

More than four children die every day as a result of child abuse. Nearly 3/4 (75.3%) of all child fatalities occur in children younger than 3 years old.⁵ It is estimated that between 50-60% of child

Alcohol & Drug Use

10-11% of all births are affected by prenatal alcohol or illicit drug exposure.⁶

Substance use during pregnancy may result in premature birth, miscarriage, and a variety of behavioral and cognitive problems in exposed children.⁷

Alcohol use among pregnant women 15-44 years old:⁸

- 15.8% ages 15-17
- 9.8% ages 18-25
- 12.5% ages 26-44

30% children will later abuse their own children.⁹

STOP the abuse

25% are more likely to experience teenage pregnancy.¹⁰

1. U.S. Department of Health and Human Services, Administration for Children and Families, Administration on Children, Youth and Families, Children's Bureau. (2010). Child Maltreatment 2010. Report No. 10-249. Washington, DC: Administration on Children, Youth and Families, Administration on Children, Youth and Families, Children's Bureau. <http://www.aclufhhs.gov/childmaltreatment>

2. U.S. Department of Health and Human Services, Administration for Children and Families, Administration on Children, Youth and Families, Children's Bureau. (2010). Child Maltreatment 2010. Report No. 10-249. Washington, DC: Administration on Children, Youth and Families, Administration on Children, Youth and Families, Children's Bureau. <http://www.aclufhhs.gov/childmaltreatment>

3. U.S. Department of Health and Human Services, Administration for Children and Families, Administration on Children, Youth and Families, Children's Bureau. (2010). Child Maltreatment 2010. Report No. 10-249. Washington, DC: Administration on Children, Youth and Families, Administration on Children, Youth and Families, Children's Bureau. <http://www.aclufhhs.gov/childmaltreatment>

4. National Center on Child Abuse and Neglect. (2010). Child Abuse and Neglect: National Report to Congress. Washington, DC: National Center on Child Abuse and Neglect. <http://www.nccan.gov/childabuseandneglect>

5. National Center on Child Abuse and Neglect. (2010). Child Abuse and Neglect: National Report to Congress. Washington, DC: National Center on Child Abuse and Neglect. <http://www.nccan.gov/childabuseandneglect>

6. National Center on Child Abuse and Neglect. (2010). Child Abuse and Neglect: National Report to Congress. Washington, DC: National Center on Child Abuse and Neglect. <http://www.nccan.gov/childabuseandneglect>

7. National Center on Child Abuse and Neglect. (2010). Child Abuse and Neglect: National Report to Congress. Washington, DC: National Center on Child Abuse and Neglect. <http://www.nccan.gov/childabuseandneglect>

8. National Center on Child Abuse and Neglect. (2010). Child Abuse and Neglect: National Report to Congress. Washington, DC: National Center on Child Abuse and Neglect. <http://www.nccan.gov/childabuseandneglect>

9. National Center on Child Abuse and Neglect. (2010). Child Abuse and Neglect: National Report to Congress. Washington, DC: National Center on Child Abuse and Neglect. <http://www.nccan.gov/childabuseandneglect>

10. National Center on Child Abuse and Neglect. (2010). Child Abuse and Neglect: National Report to Congress. Washington, DC: National Center on Child Abuse and Neglect. <http://www.nccan.gov/childabuseandneglect>

Realityworks is an Equal Opportunity Employer

855.351.8938 | www.realityworks.com

Connect with your peers! Connect with us!

JOIN US ON

Be part of the conversation about engaging learners, technology tips, issues facing all areas of education, and much more.

Check out the community forum at www.realityworks.com!

Connect with your peers! Connect with us!

JOIN US ON

Be part of the conversation about engaging learners, technology tips, issues facing all areas of education, and much more.

Check out the community forum at www.realityworks.com!

Realityworks ...an employee-owned company
Live it. Learn it.™

855.351.8938 | www.realityworks.com

© 2014 Realityworks, Inc. All rights reserved.

printinfographicinstructions-AJ | 05/2014