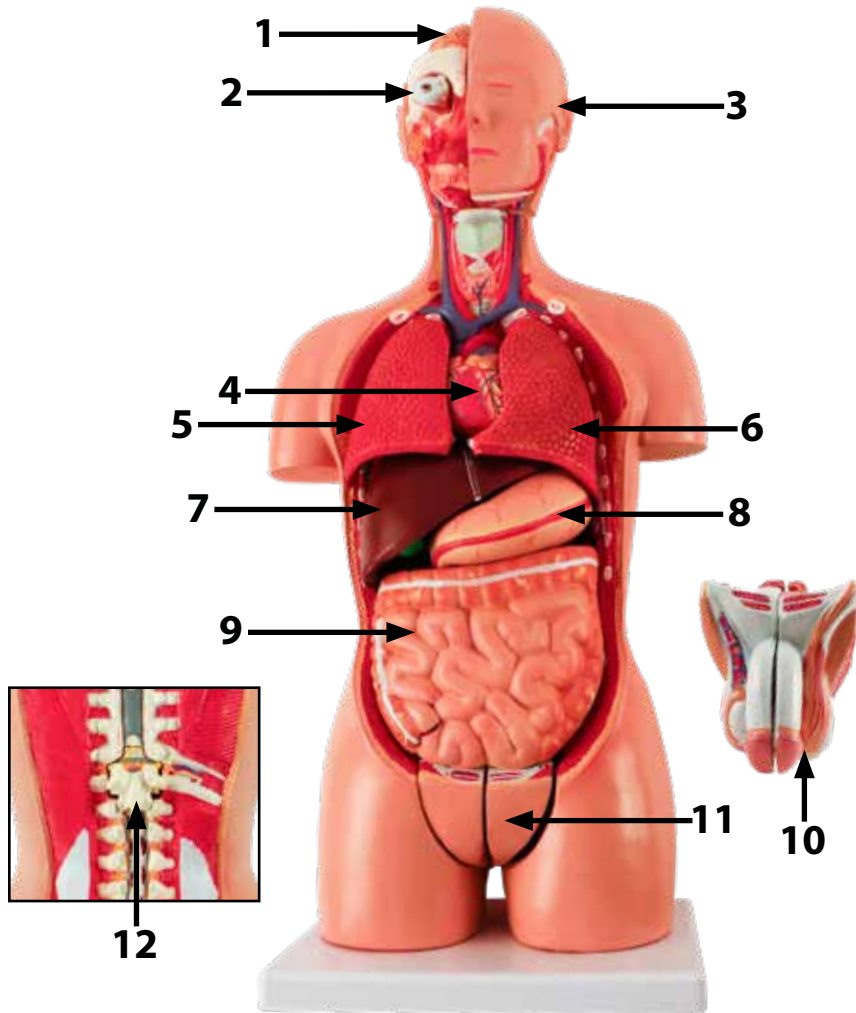


HUMAN TORSO MODEL TABLETOP SIZE

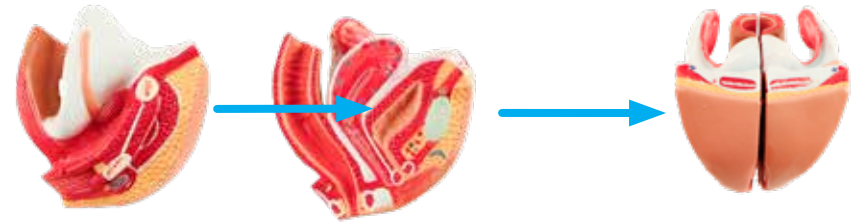
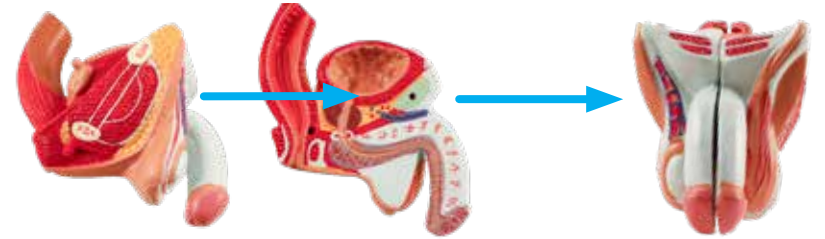
Parts identification:

- | | |
|---------------------|---------------------------------|
| 1. Right brain half | 7. Liver |
| 2. Right eye | 8. Stomach |
| 3. Head (2 pieces) | 9. Intestines (2 pieces) |
| 4. Heart (2 pieces) | 10. Male genitalia (2 pieces) |
| 5. Right lung | 11. Female genitalia (2 pieces) |
| 6. Left lung | 12. Vertebrae |

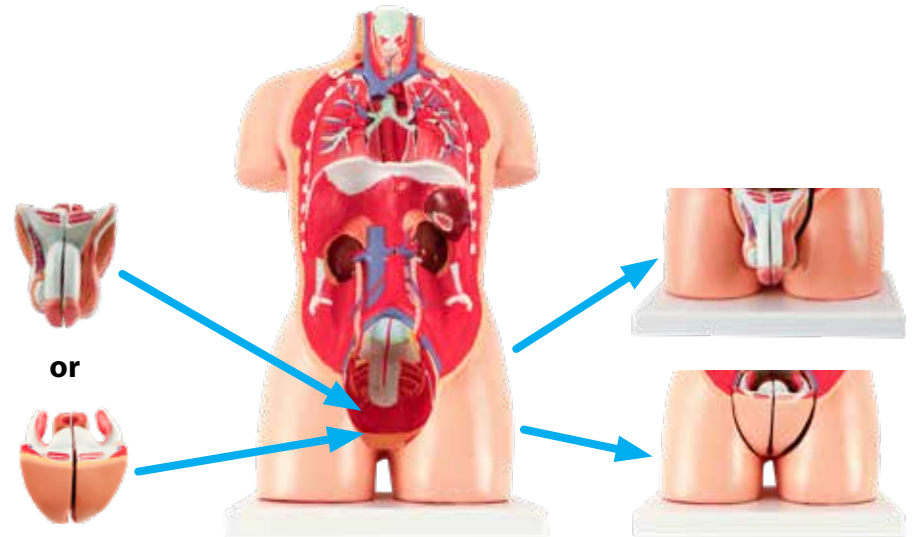


Assembly instructions:

- 1** Align and attach male and female genitalia pieces

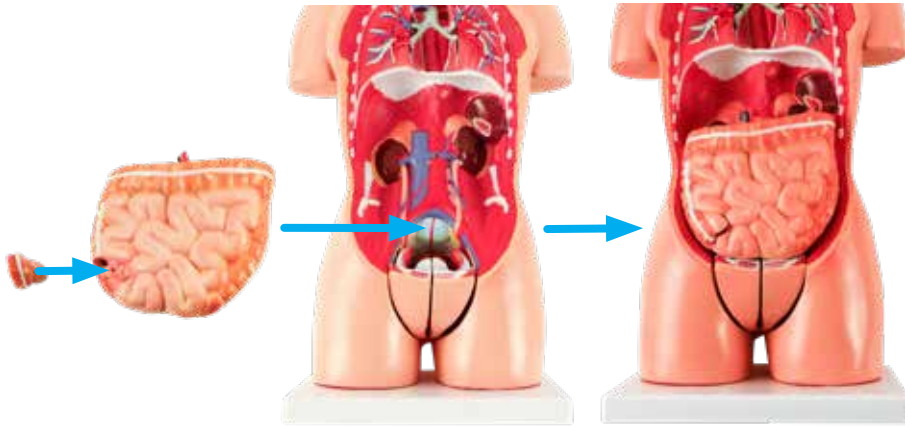


- 2** Align and insert male or female genitalia into torso

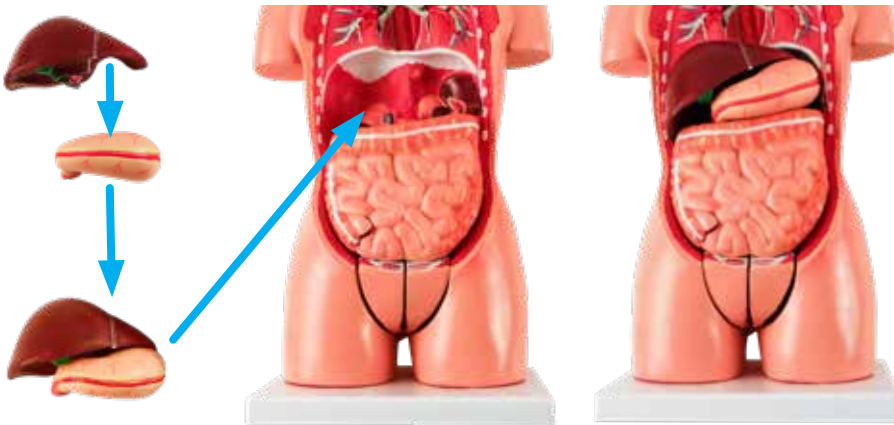


HUMAN TORSO MODEL TABLETOP SIZE

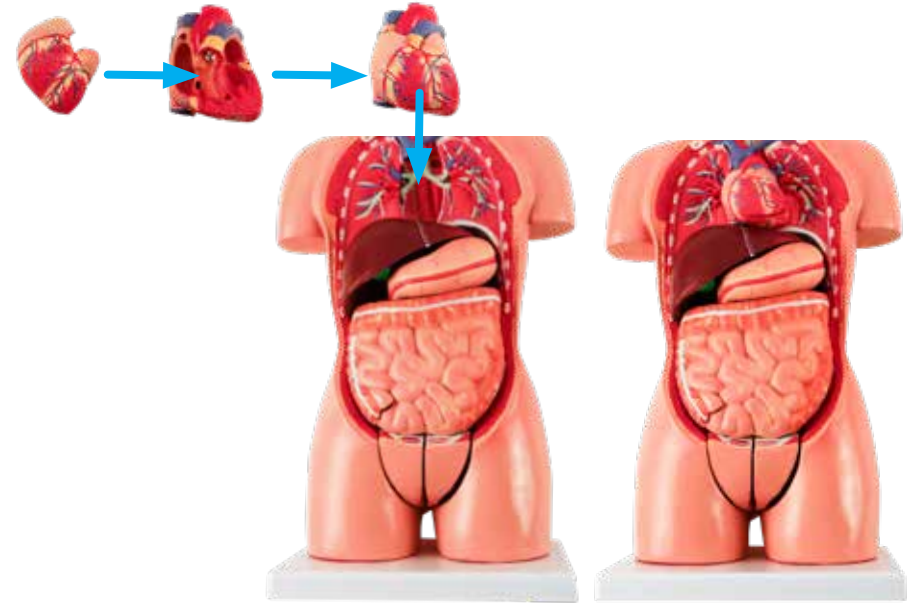
- 3** Align small intestine piece with intestines and attach, then align and insert intestines into torso



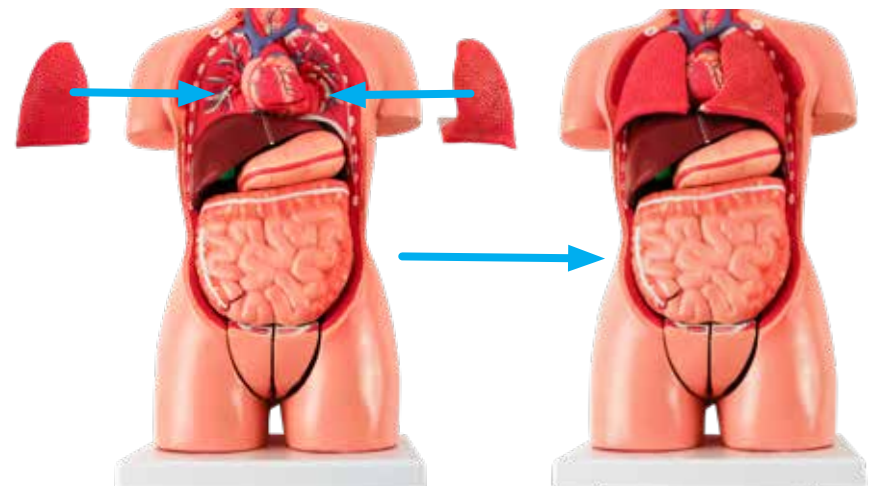
- 4** Align and stack liver and stomach pieces, then insert into torso



- 5** Align and attach heart pieces, then insert heart into torso

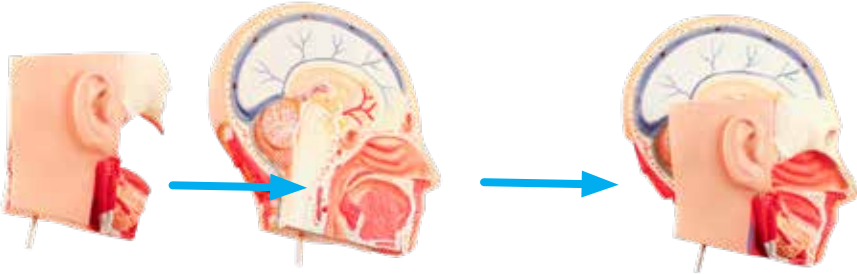


- 6** Align lungs with torso and attach

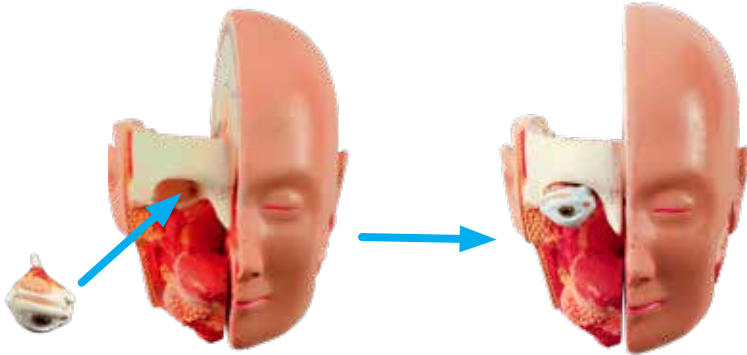


HUMAN TORSO MODEL TABLETOP SIZE

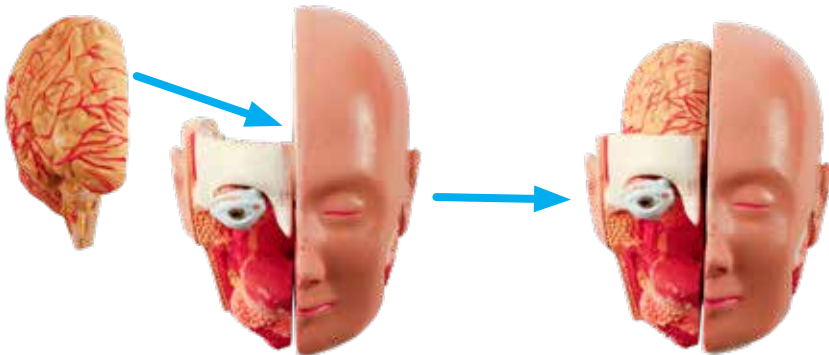
7 Align head pieces and attach



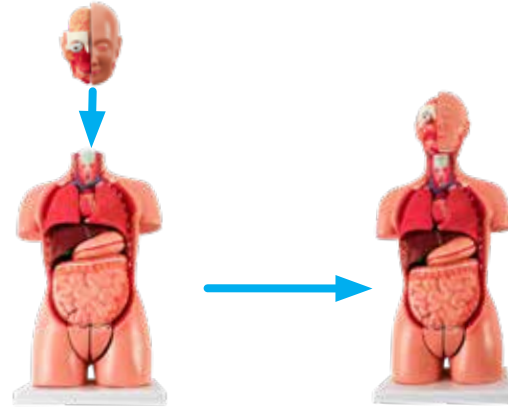
8 Align eye with eye socket and attach



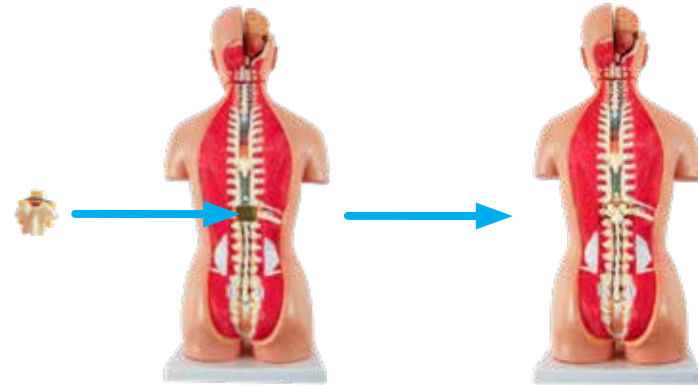
9 Align brain with head cavity and place inside



10 Align head with torso and attach



11 Align and insert vertebrae piece into spine of torso



12 Completed Human Torso Model Tabletop Size

